

AlterPath™ OnSite

Out-of-Band Remote Administration

The AlterPath™ OnSite provides both remote sites and branch offices with a compact, cost-effective solution for managing IT assets. Unlike competing offerings, the AlterPath OnSite has been designed specifically for co-located remote KVM and console asset management. It may be used to access up to 16 traditional or headless servers, networking devices, infrastructure components, or any other device with a serial console or KVM port. The AlterPath OnSite may be used in a stand-alone fashion or as part of Cyclades fully integrated out-of-band infrastructure (OOBI) solution. In a single package, it combines the best of Cyclades KVM over IP and serial console server technologies with security features specific to remote administration.

The AlterPath OnSite is:

- **Powerful**
Leverages embedded Linux® technology
- **Flexible**
Offers a variety of configurations and remote access paths
- **Secure**
Supports SSL/SSH, modem dial back and server-based authentication schemes (e.g., LDAP, Kerberos)
- **Efficient**
Integrates disparate management functions
- **Cost-Effective**
Eliminates KVM-to-serial adapters and external power supplies
- **Simple to Deploy**
Includes configuration wizards and DHCP support
- **Part of Cyclades Fully Integrated Solution**
Integrates with Cyclades AlterPath System of OOBI products

The AlterPath OnSite's KVM interface utilizes high performance KVM over IP technology; its console management features include native support for Microsoft® Windows® 2003 EMS protocol, data buffering, event notifications, and direct access to any console ports. Utilizing a standard Web browser interface, the AlterPath OnSite does not require special client software.



An Avocent Company



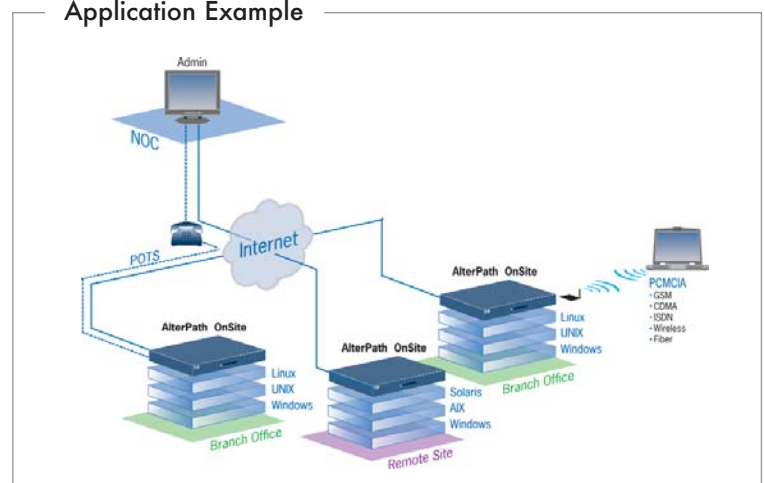
Applications:

- Easily access, diagnose and restore IT assets
- Receive proactive notifications of problems, and manage them before they become crises
- Perform remote administration for UNIX®, Linux-, AIX® and Solaris™-based operating systems, Windows platforms and network infrastructure components

Benefits:

- Eliminate site visits to revive IT assets or to install software updates
- Reduce MTTR significantly and increase asset and personnel productivity
- Achieve console or BIOS-level control over any IT device with a serial console or KVM port
- Eliminate separate KVM- or console-specific management platforms
- Seamlessly manage KVM switches, console servers, power outlets, and the AlterPath OnSite from a single platform with the AlterPath Manager

Application Example



AlterPath OnSite Specifications

Hardware	Features																																	
<p>CPU: PowerPC MPC859 @ 133 MHz</p> <p>Memory: 128 MB SDRAM/128 MB flash</p> <p>Interfaces: 1 Ethernet 10/100 BT on RJ-45 1 RS-232 console on RJ-45 2 RS-232 DTE on RJ-45 for power manager or external modem 1 V.92 internal modem on RJ-11 4 or 8 RS-232 serial ports on DB-9 4 or 8 KVM ports on RJ-45</p> <p>Dual PCMCIA Slots Supporting: Secondary Ethernet, wireless Ethernet, GSM, CDMA, GPRS, ISDN, fiber optic, data storage</p> <p>Power: Universal AC, 100-240 VAC, 50/60 Hz, 0.7 A max.</p> <p>Environmental: Operating Temperature: 50°F to 122°F (10°C to 50°C)</p> <p>Storage Temperature: -40°F to 185°F (-40°C to 85°C)</p> <p>Humidity: 5% to 90% noncondensing</p> <p>Enclosure: Powder-coated steel</p> <p>Dimensions: (WxDxH) 17 x 10.5 x 1.75 in (43.18 x 26.25 x 4.45 cm)</p> <p>Weight: 8.5 lb (3.9 kg)</p> <p>Certification: FCC part 15A, EN55022, A (CE), EN55024, EN60950, CSA, C-Tick, ICES-003, VCCI</p>	<p>Security</p> <ul style="list-style-type: none"> • SSHv1 and SSHv2 • Local, RADIUS, TACACS+, LDAP, NIS, NTLM, Active Directory and Kerberos authentication • Token-based strong authentication (RSA SecurID) • Local backup user authentication support • PAP/CHAP authentication (for dial-up lines) • Dial-back support • IP packet and security filtering • User access lists • System event syslog • IPSec support <p>Console Management</p> <ul style="list-style-type: none"> • Sun break-safe (Solaris Ready™ Certified) • Break-over SSH support • Windows Server 2003 EMS support • Offline data buffering—local or remote (NFS/Syslog) • Time stamp for data buffering • Unlimited number of simultaneous sessions to serial ports • Simultaneous access on the same port (port sniffing) • Event notification (e-mail, pager, SNMP trap) <p>System Management</p> <ul style="list-style-type: none"> • Configuration wizard for first time users • Command line interface (Linux Shell) • Web Management Interface (HTTP/HTTPS) • On-screen display for local configuration • SNMP • Optional integrated power management with the AlterPath PM <p>Server Management via KVM</p> <ul style="list-style-type: none"> • Simultaneous access on the same port <ul style="list-style-type: none"> • AlterPath OnSite 441, 841, 881, 882-1 local and 1 remote user • AlterPath OnSite 882-2 remote users • Support for VGA resolutions up to 1280 x 1024 @ 60 Hz • CAT5-based KVM terminators for PS/2, PC USB, and Sun USB keyboard and mouse interfaces <p>Upgrades</p> <ul style="list-style-type: none"> • Upgrades available via FTP • Flash upgradeable • TFTP support for network boot <p>Additional Protocols Supported</p> <ul style="list-style-type: none"> • DHCP for dynamic IP address assignment • PPP/SLIP for dial-up connections • NTP for time server synchronization • RFC2217 support for remote serial port access 																																	
<table border="1"> <thead> <tr> <th>Part Number</th> <th>Model</th> <th>Description</th> </tr> </thead> <tbody> <tr> <td>ATP7441</td> <td>AlterPath OnSite 441</td> <td>4 console ports and 4 KVM ports; 1 remote and 1 local KVM user</td> </tr> <tr> <td>ATP7841</td> <td>AlterPath OnSite 841</td> <td>8 console ports and 4 KVM ports; 1 remote and 1 local KVM user</td> </tr> <tr> <td>ATP7881</td> <td>AlterPath OnSite 881</td> <td>8 console ports and 8 KVM ports; 1 remote and 1 local KVM user</td> </tr> <tr> <td>ATP7882</td> <td>AlterPath OnSite 882</td> <td>8 console ports and 8 KVM ports; 2 simultaneous remote KVM users or 1 remote and 1 local KVM user</td> </tr> <tr> <td>ATP4610</td> <td>AlterPath KVM Terminator PS/2</td> <td></td> </tr> <tr> <td>ATP4620</td> <td>AlterPath KVM Terminator Sun USB</td> <td></td> </tr> <tr> <td>ATP4630</td> <td>AlterPath KVM Terminator PC USB</td> <td></td> </tr> <tr> <td>ADB0036</td> <td>Adapter, DB-9 female to RJ-45 female crossover</td> <td></td> </tr> <tr> <td>CAB0036</td> <td>Cable DB-9 female to RJ-45 male crossover 6 feet</td> <td></td> </tr> <tr> <td>CAB0286</td> <td>Cable DB-9 female to DB-9 female crossover 6 feet</td> <td></td> </tr> </tbody> </table>	Part Number	Model	Description	ATP7441	AlterPath OnSite 441	4 console ports and 4 KVM ports; 1 remote and 1 local KVM user	ATP7841	AlterPath OnSite 841	8 console ports and 4 KVM ports; 1 remote and 1 local KVM user	ATP7881	AlterPath OnSite 881	8 console ports and 8 KVM ports; 1 remote and 1 local KVM user	ATP7882	AlterPath OnSite 882	8 console ports and 8 KVM ports; 2 simultaneous remote KVM users or 1 remote and 1 local KVM user	ATP4610	AlterPath KVM Terminator PS/2		ATP4620	AlterPath KVM Terminator Sun USB		ATP4630	AlterPath KVM Terminator PC USB		ADB0036	Adapter, DB-9 female to RJ-45 female crossover		CAB0036	Cable DB-9 female to RJ-45 male crossover 6 feet		CAB0286	Cable DB-9 female to DB-9 female crossover 6 feet		
Part Number	Model	Description																																
ATP7441	AlterPath OnSite 441	4 console ports and 4 KVM ports; 1 remote and 1 local KVM user																																
ATP7841	AlterPath OnSite 841	8 console ports and 4 KVM ports; 1 remote and 1 local KVM user																																
ATP7881	AlterPath OnSite 881	8 console ports and 8 KVM ports; 1 remote and 1 local KVM user																																
ATP7882	AlterPath OnSite 882	8 console ports and 8 KVM ports; 2 simultaneous remote KVM users or 1 remote and 1 local KVM user																																
ATP4610	AlterPath KVM Terminator PS/2																																	
ATP4620	AlterPath KVM Terminator Sun USB																																	
ATP4630	AlterPath KVM Terminator PC USB																																	
ADB0036	Adapter, DB-9 female to RJ-45 female crossover																																	
CAB0036	Cable DB-9 female to RJ-45 male crossover 6 feet																																	
CAB0286	Cable DB-9 female to DB-9 female crossover 6 feet																																	